

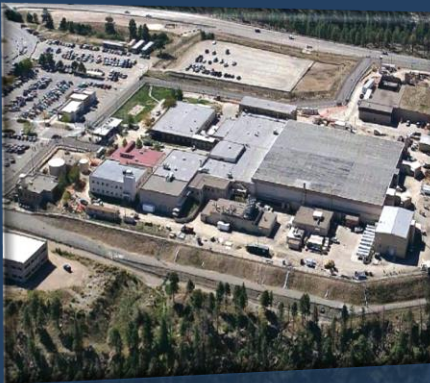
STATEMENT of QUALIFICATIONS



Eberline Services (Eberline) is an U.S.-based professional services firm that provides programmatic solutions for clients within the Commercial/Industrial and Government (i.e., DOE, USACE, US Navy, State and Tribal government) sectors. Due to the company's +50-year legacy in responding to unique challenges associated within complex environments including nuclear, energy, mining/industrial, and state/municipal sites with water and soil contamination issues, Eberline has been helping its clients with a focus on developing effective solutions that meet their specific need and objectives.

Eberline has provided the planning, engineering and design, mobilization, and operations of remedial operations for locations across the U.S., South Pacific, and Australia. Due to vast and varying needs across market sectors and geographies, Eberline also has formed a Consortia of mostly other small businesses and industry experts that partner with us to provide the most appropriate and efficient technologies and solutions. Our extended enterprise of industry specific firms and/or independent technical experts affords Eberline and its Clients effective flexibility in responding to complex or changing conditions for a variety of technical challenges.

Programmatic Support



- **Project Management/Programmatic Support Services** including baseline development, lifecycle cost estimating, schedule development, WBS development, risk management, Earned Value Management System, and project scheduling and controls support
- **Quality Assurance Program Support** including ISO 9000, NQA-1 Compliance/Audit Support and Training
- **Site Data Reconstruction and Data Management** including field data gathering, surveys, laboratory analysis management, and algorithm development for reporting
- **Technical, Engineering, Maintenance, And Compliance Support** with Consortia members for seismic/geotechnical, civil, mechanical, and electrical engineering, and site construction and rehabilitation services

Radiological



- Environmental Safety & Health (ES&H) Support Services
- Ecological and Human Health Risk Assessments and Modeling including RESRAD
- Low-level Rad-Contaminated Material Sorting/Reduction including small materials (tooling/packaging/PPE) automated screening stations to large scale soil sorting and reduction systems
- Radiological Control Technicians (RCT) and Industrial Hygiene/Safety (IH/IS) Technicians and Monitoring including long term “Q”- and “L”-cleared site escort/screening support
- Radiological Control Program Development and Management
- Radiological Surveys Planning and Implementation
- Radiological Site Characterization and Mapping
- MARSSIM Compliance
- NQA-1 Compliance Support

Environmental



- Environmental Compliance Support
- Electric Resistance Heating (ERH) for soil and groundwater remediation and removal of LNAPL, DNAPL, VOCs, CVOCs and other sister products
- Shallow to Deep Characterization/Monitoring Well Installation Planning and Oversight including monitoring and sampling systems, geophysical logging, geologic coring, aquifer testing, well rehabilitation, and P&A
- Site Restoration
- RCRA Remediation/Remedial System Design
- Soil and Groundwater Field Sampling, Logging, and Reporting
- Groundwater Monitoring
- Ecological and Human Health Risk Assessments and Modeling
- Environmental Site Investigations and Characterization
- Site Data Reconstruction and Data Management
- Regulatory Compliance/Report Preparation

D&D Support



- **ES&H Support** including Certified Health Physics/Industrial Hygienists for health risk assessments, exposure rate surveys, radiological site surveys (entry through post-decommissioning) and characterization, radiological protection and safety plan development/oversight, and radiological control program development
- **Radiological Control and Monitoring** with certified field IH/Safety Technicians and Radiological Control Technicians (RCTs) compliant with appropriate radiological control and safety (OSHA) standards
- **Low-level Rad-Contaminated Material and Soil Sorting/Reduction**
- **In-situ Gamma High-Resolution Spectroscopy**
- **Waste Characterization and Disposal** support including sampling and analysis, visual examination and repackaging, waste quality control and compliance, and transportation and disposal plans
- **Environmental Monitoring Plan** support including field sampling, monitor well installations, SWIPP development, and data review and management
- **Quality Assurance and Control Program** compliance (including surveillances and reporting) and data management/record keeping support
- **Regulatory Compliance and Reporting** including technical writing and graphics development.

Waste Management Support



- Waste Minimization and Management including low-level rad-contaminated material automated screening and soil/construction material sorting/ systems
- Health Physics and Industrial Hygiene
- Regulatory Compliance and Environmental Management
- Analytical Services and Radiochemistry including planning, field oversight, data management, evaluation and reporting
- Hazardous Solid Waste Sampling Plan Development
- Materials Disposal Areas/Landfill Cover Design and Monitoring Support

Mining



- Mine Exploration, Development and Resource Evaluations
- Geochemical Exploration Plan Development And Analyses
- Geotechnical Investigations and Engineering
- Geologic Hazards Assessments
- Site Feasibility Studies
- Environmental Investigations
- Acid Mine Drainage (AMD) Remediation
- SWIPP Development
- Field Sampling Support
- Site Safety Monitoring
- Quality Control Program Development Regulatory Compliance Support and Reporting

CONTACT INFO

Paul Fensterer – COO

p.fensterer@eberlineservices.com

Cell: (505) 249-6486

Website: www.eberlineservices.com